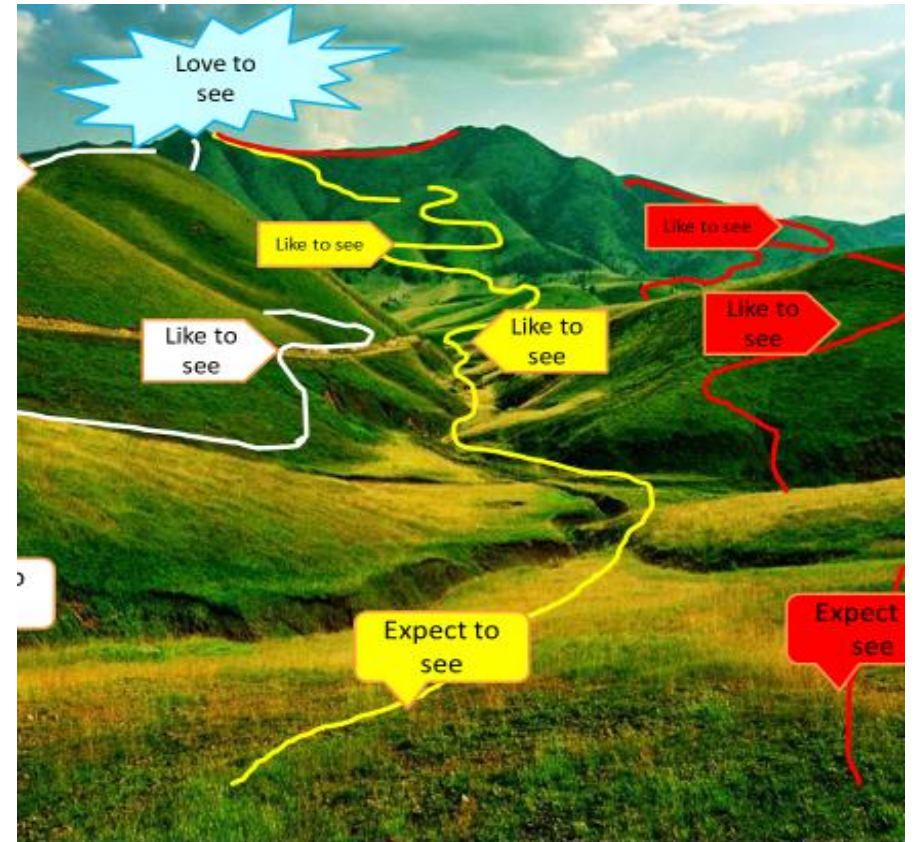


Taking the Climate Emergency Seriously

1. CSCF Vital Conversation & Support for Coordination/Collaboration 2021, 2022, 2023
2. Community Leadership for Flourishing Events 2022-2023
3. Public Health Climate Change Monitoring, Vulnerability Assessment & Understanding of Municipal Roles 2023
4. Northumberland Climate Transition Cohort 2023
5. Trent Hills Strengths, Opportunities & Threats



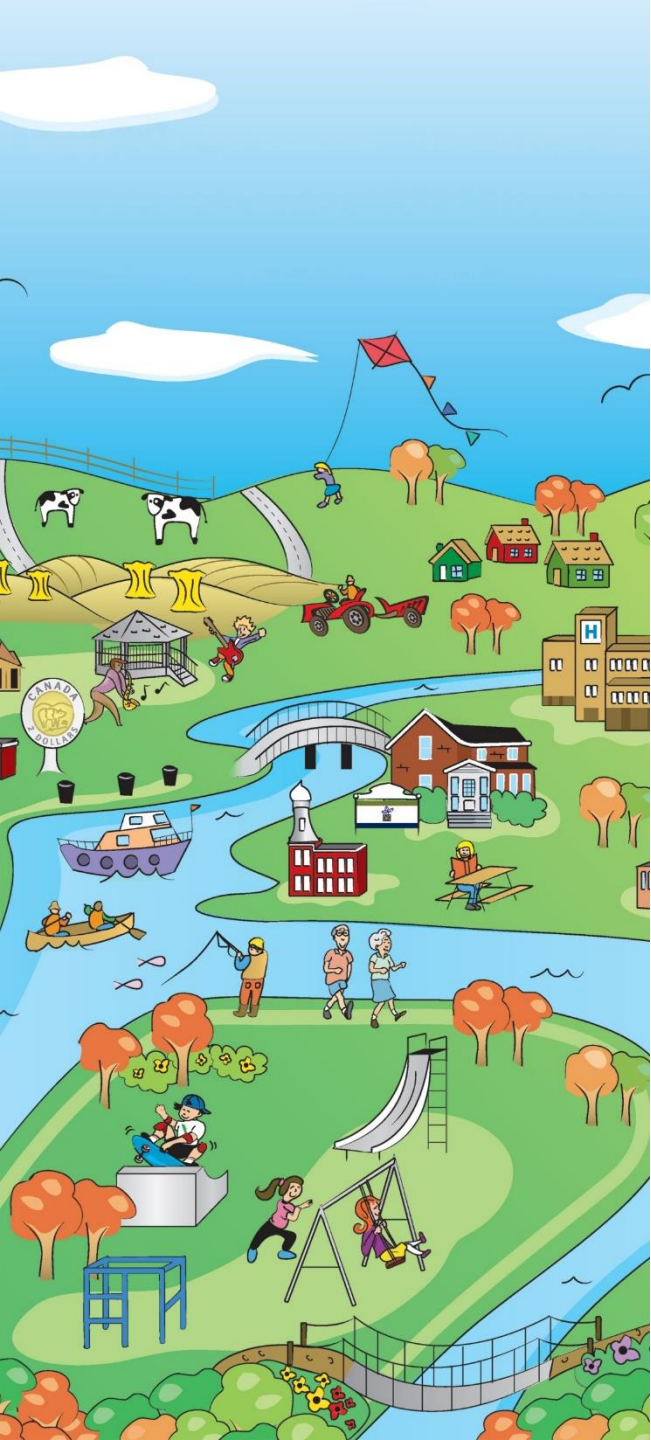
Traditional territory of the Michi Saagiig and Chippewa Nations

Treaty 20 – Known as Williams Treaties First Nations, which include: Curve Lake, Hiawatha, Alderville, Scugog Island, Rama, Beausoleil, and Georgina Island First Nations.

With this territorial acknowledgement we are taking part in recognizing our colonial history and obligations for reconciliation. We are honoring the land and Indigenous heritage, which dates back over 10,000 years.

(Adapted from Curve Lake First Nation)





First Vital Conversation 2021: Environment & Community Environmental Grants & Environment Fund

32 grant projects between 2003 and 2021

Total Environmental grant funding = **\$374,247**

Highlighting 3 interesting projects:

\$25,000 to **Campbellford Memorial Hospital**

\$11,000 to **local schools**

\$ 4,908 to **Bike Action Trent Hills, in partnership**





2021 Municipality of Trent Hills – Lowering energy consumption, reducing fossil fuels, adopting best practices and compliance with policies

Corporate Energy Management Policy (2019-2024)

Reducing consumption and greenhouse gas emissions – Meeting Targets.

Tree Canopy Policy - Best practices to manage urban tree canopy and future development projects.



Come for a visit. Stay for a lifestyle.

Leadership for Flourishing 2022



Engaging community in climate leadership 2022 & 2023

WHOLE LEARNING ALLIANCE PROUDLY PRESENTS

THE FUTURE WE WANT



in partnership with THE ARON THEATRE CO-OP IN CAMPBELLFORD



SEP 22 / OUR RELATIONSHIP WITH WATER

Leading with hope and spiritual courage, the Curve Lake Sacred Water Circle sees a restored relationship between human communities and water. Curve Lake Elder, Dorothy Taylor and members will screen a short film and share a water teaching and ceremony.



OCT 13 / CALL OF THE FOREST

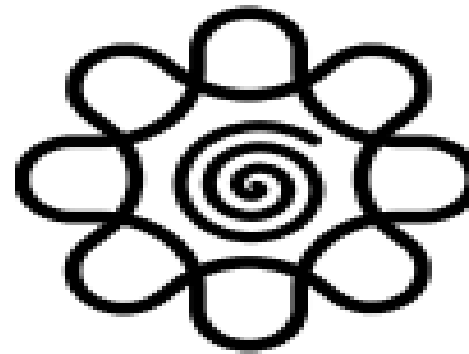
Call of the Forest follows world-recognized medical biochemist and botanist Diana Beresford-Kroeger as she investigates our profound biological and spiritual connection to forests. Her global journey explores the science, folklore, and restoration challenges of this essential eco-system.

Note: On Oct 14, join a zoom talk, with Beresford-Kroeger answering questions about how to protect our local forests.



NOV 10 / LEADERSHIP FOR FLOURISHING

Exploring possibilities for community flourishing (social, environmental and economic). Speakers will share models of creative and collaborative partnerships that help grow sustainable green communities. Participants will be invited to identify their flourishing community priorities.



WHOLE LEARNING ALLIANCE

2023 - **Flourishing Community Zone** at Incredible Edibles Festival to Engage Community & Support Sustainability leadership Groups across Northumberland including Public Health.

Public Health Standards include monitoring the impacts of climate change within their jurisdiction to inform local vulnerability plans.

Climate Change Health Vulnerability and Adaptation Assessment

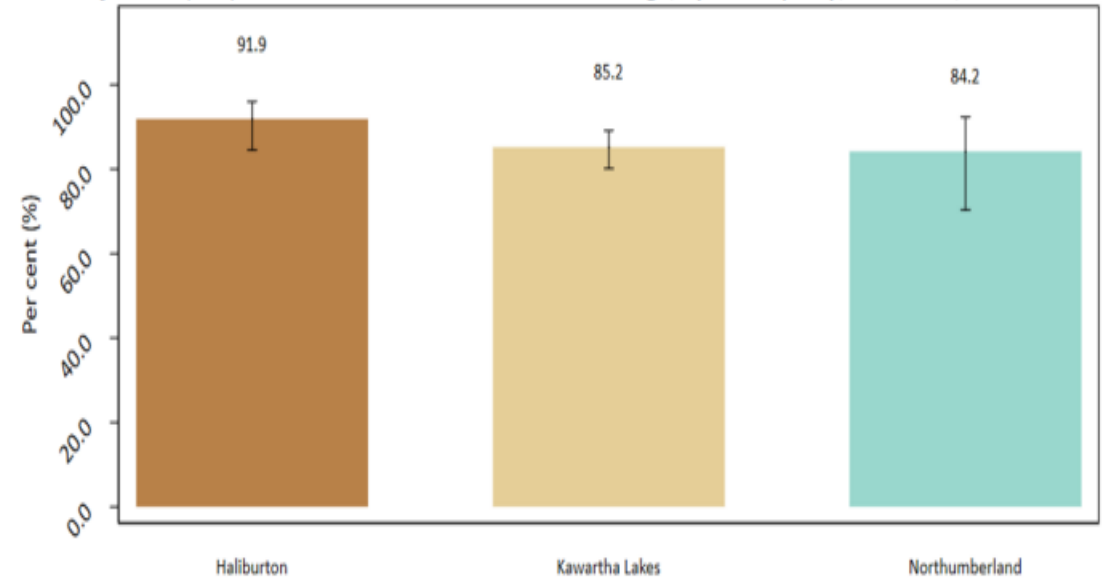
for the
Haliburton, Kawartha, Pine Ridge District Health Unit

Executive Summary

Published May 2023

HALIBURTON, KAWARTHA, PINE RIDGE DISTRICT HEALTH UNIT

Figure 1.2 Percent of adults (18+) who are concerned about climate change, by municipality, HKPRDHU, 2019



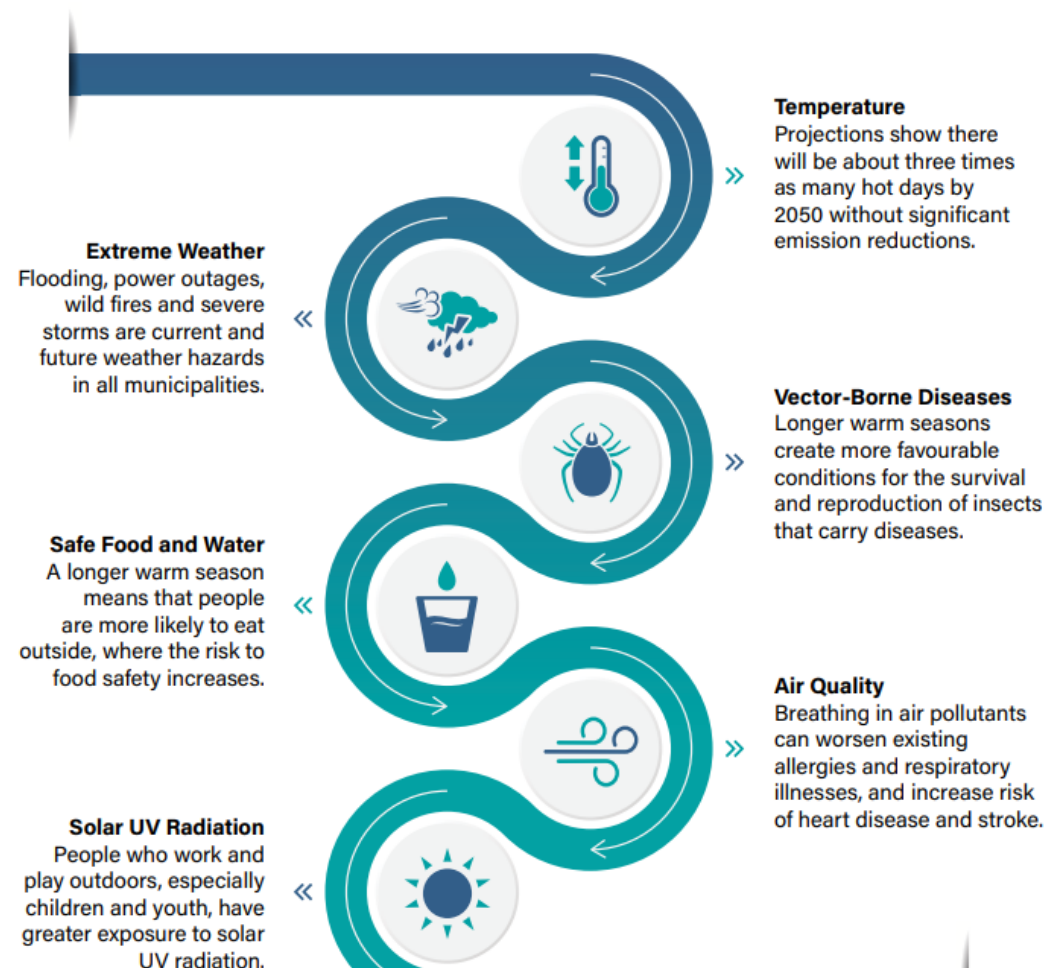
Sample Size: 1119
*High Variability; Interpret with caution
**Data not released
Data Source: RRFSS (Jan-Dec, 2019), HKPRDHU and the Institute for Social Research (ISR), York University.

Public Health Concerns

- Adaptation is the process individuals, communities and societies go through to prepare for and cope with an uncertain future. Adapting to climate change means taking measures to reduce the negative effects of climate change.
- Mitigation means human interventions to reduce greenhouse gases or increase carbon storage (sinks).
- Resilience describes the capacity of a system (or individual) to prepare and plan for, respond to and recover from a disturbance and still retain essentially the same function.

Key Findings

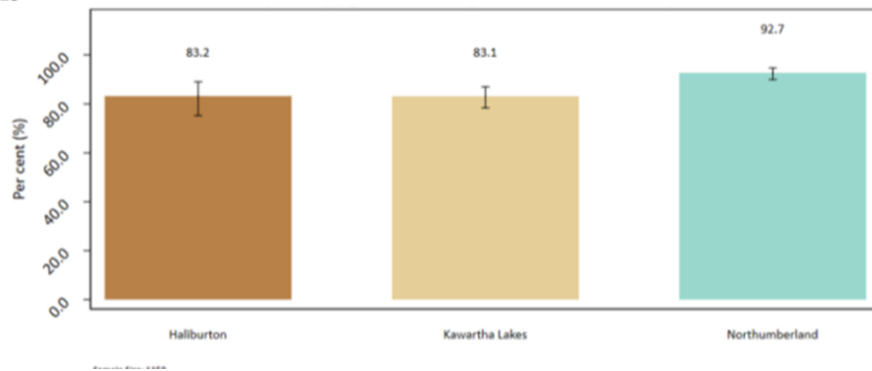
Unless there is a significant and immediate reduction in global greenhouse gas emissions, all municipalities will experience changes to local weather patterns due to climate change. These will in turn have a negative impact on the health of residents, especially those most vulnerable, without focused and collaborative efforts to increase adaptive capacity.



Extreme weather events are top hazards of concern in Northumberland County. What are potential health impacts of events like floods, winter storms, windstorms, freezing rain, tornadoes?

- Death
- Physical injuries
- Carbon Monoxide poisoning
- Food and waterborne illnesses
- Falls
- Reduced access to health and emergency services
- Mental Health impacts

Figure 1.7 Percent of adults (18+) who think climate change is likely to cause more extreme weather locally, by municipality, HKPRDHU, 2019

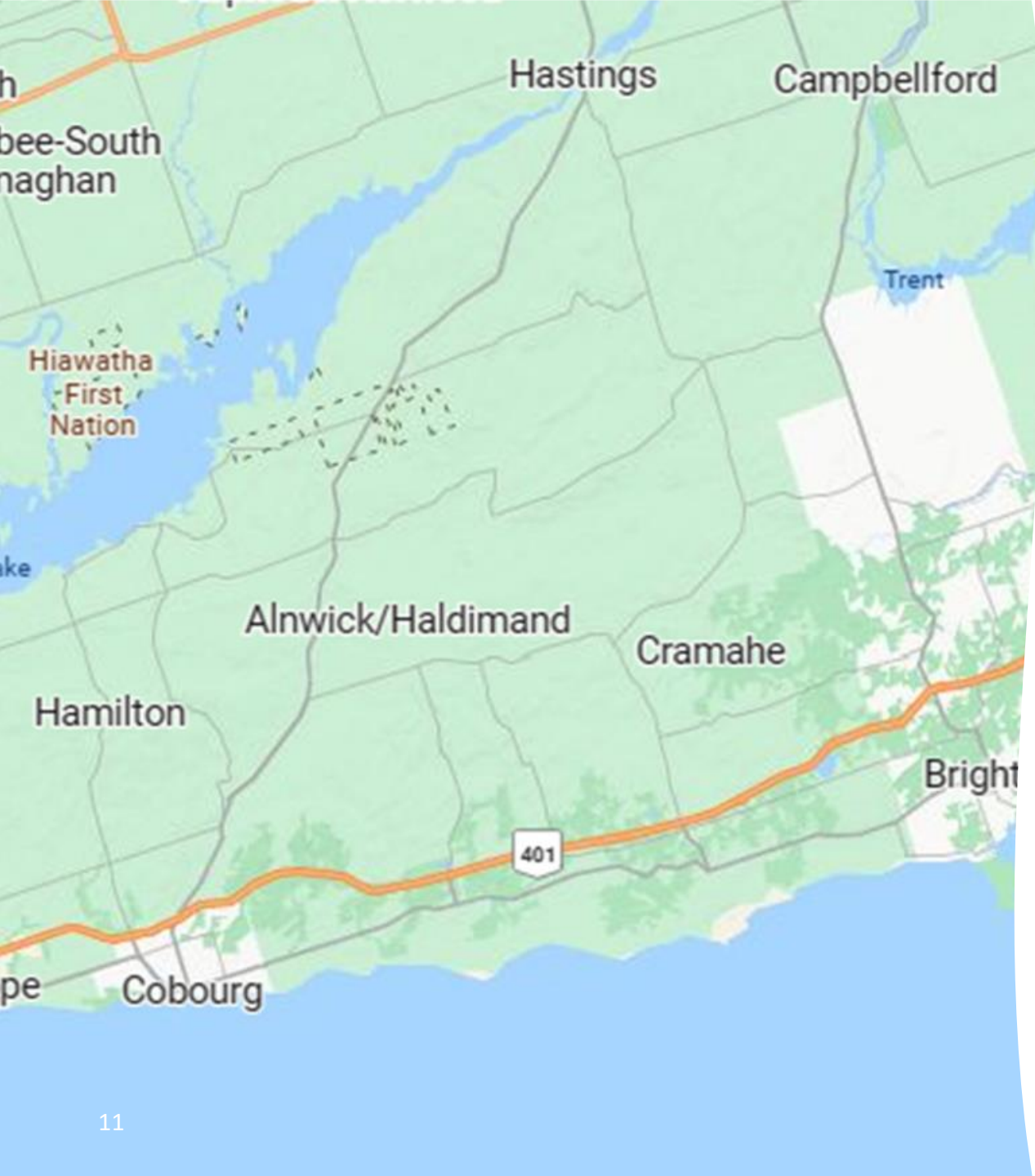


Municipal Role

Municipalities have a key role in increasing adaptation

- Climate change plans
- Land use policies and planning
- Transportation
- Poverty reduction
- Emergency planning and preparedness
- Community infrastructure & design
- Agriculture and community food initiatives
- Energy and environmental initiatives
- Protecting water quality
- Economic development





Northumberland Climate Transition Cohort (2023)

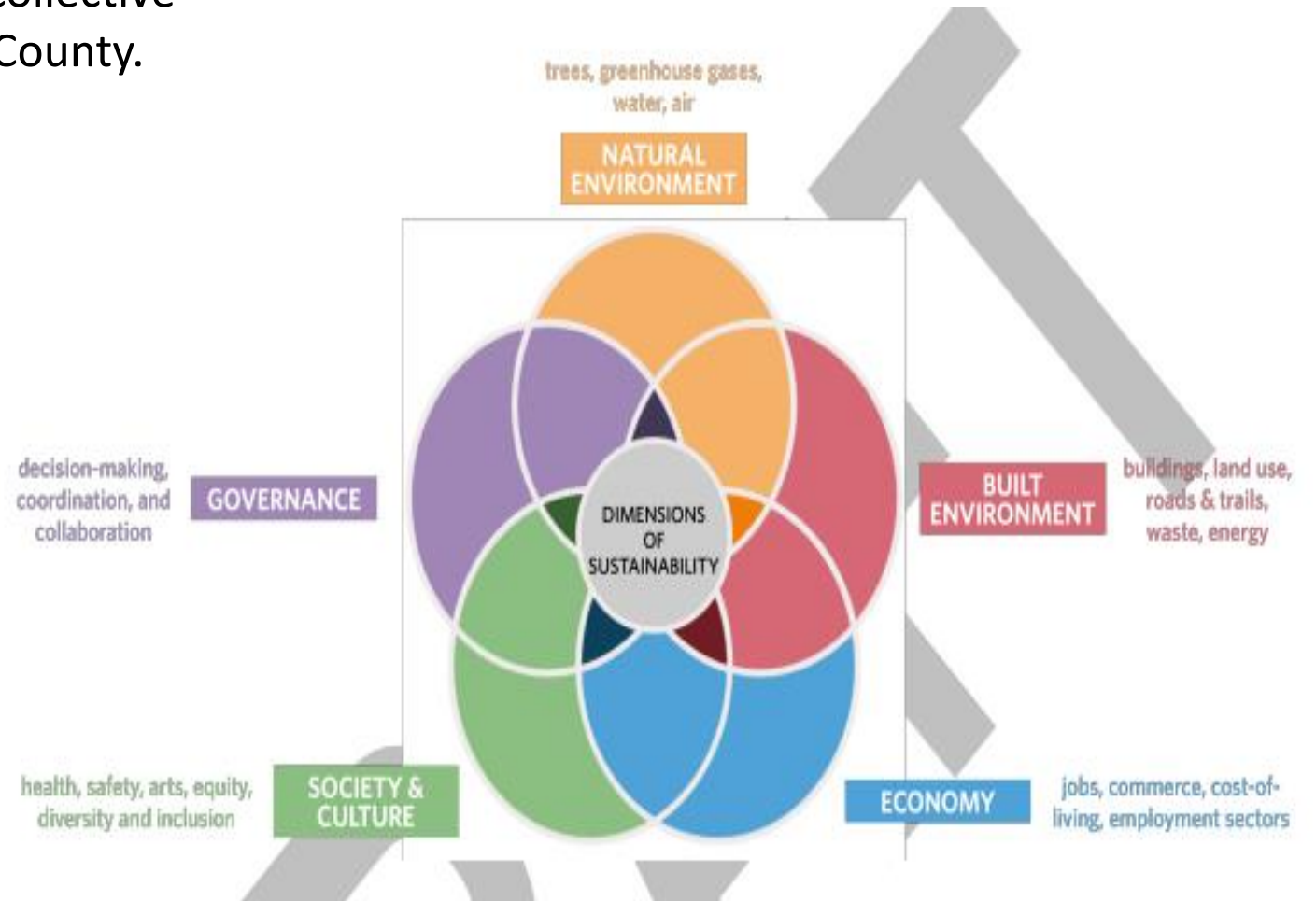
- Municipality of Port Hope (Council)
- Municipality of Brighton (Council)
- Municipality of Hamilton Township's Environmental Sustainability Committee
- Environmental Advisory Committee to the Municipality of Port Hope
- Municipality of Cramahe (Council)
- Town of Cobourg
- Brighton's Sustainability Advisory Committee
- Municipality of Trent Hills – Community representation
- Township of Alnwick/Haldimand

All seven municipalities are participating in the cohort, and monthly training with climate leaders across the country and collaborating on collective actions to advance climate action in our County.

New: Sustainability Officers being hired in Cobourg, + County 2023;

Integrated Community Climate Change Plan in 2023 (Cobourg)

Environment and Climate Change Advisory Committees.





Climate change transition priorities for rural communities include:

1. Transitioning to renewable energy sources
2. Sustainable land use practices
3. Energy efficiency
4. Waste reduction and recycling

Port Hope, advisory committee is leading the development of a Community Climate Action plan with Municipal funding.

Hamilton Township is reducing township generated Greenhouse Gas (GHG) emissions by 30% less than the 2005 levels by 2030.

Trent Hills new vision does mention sustainable practices and protecting our “picturesque landscape” and draft strategic plan is open for community consultation.

A growing community that embraces social, economic, and cultural diversity. Our urban villages and rural areas offer an active and healthy lifestyle that appeals to residents, businesses, and visitors.

Our residents take pride in their community, celebrate and protect its agricultural roots, and embrace the shared heritage from which it was formed. Trent Hills continues to be a welcoming and **inclusive community** that embraces all people.

Our residents, businesses, and the municipal corporation are committed to **sustainable practices** that protect our unique urban centres, rural communities, and picturesque landscape.

We honour the **First Nations people** upon whose traditional territory we live, and we recognize their constitutional and treaty rights



Next Steps: Trent Hills Participation in Climate Transition Cohort

Trent Hills Climate Transition SWOT Analysis – May 2023			
Strengths:	Weaknesses	Opportunities	Threats
Participating on Northumberland Climate Transition Cohort.	<p>No Municipal committee on environment and climate - as yet.</p> <p>No council liaison for Transition Cohort</p>	<p>Strategic Plan is in process. Sustainability is incorporated as a guiding principle.</p> <p>Active transportation study underway</p> <p>Energy Management Plan</p> <p>Recreation Best practices</p>	<p>Regulatory environment e.g. conflicting legislation, conflicting priorities</p> <p>Volunteer commitment</p>
Whole Learning Alliance focused on engagement and coordinating sustainability groups.	No funding for developing collaboration and network development across community sustainability initiatives.	<p>Support from Campbellford-Seymour Community Foundation for Sustainability education & community engagement during Incredible Edibles Festival July 8th</p> <p>Collaboration with Climate Change staff from HKPR Public Health on their Vulnerability and Adaptation Assessment</p>	Volunteer commitment

Identifying current strengths, weaknesses, opportunities and threats to share with other cohort municipalities and find areas of overlap.